

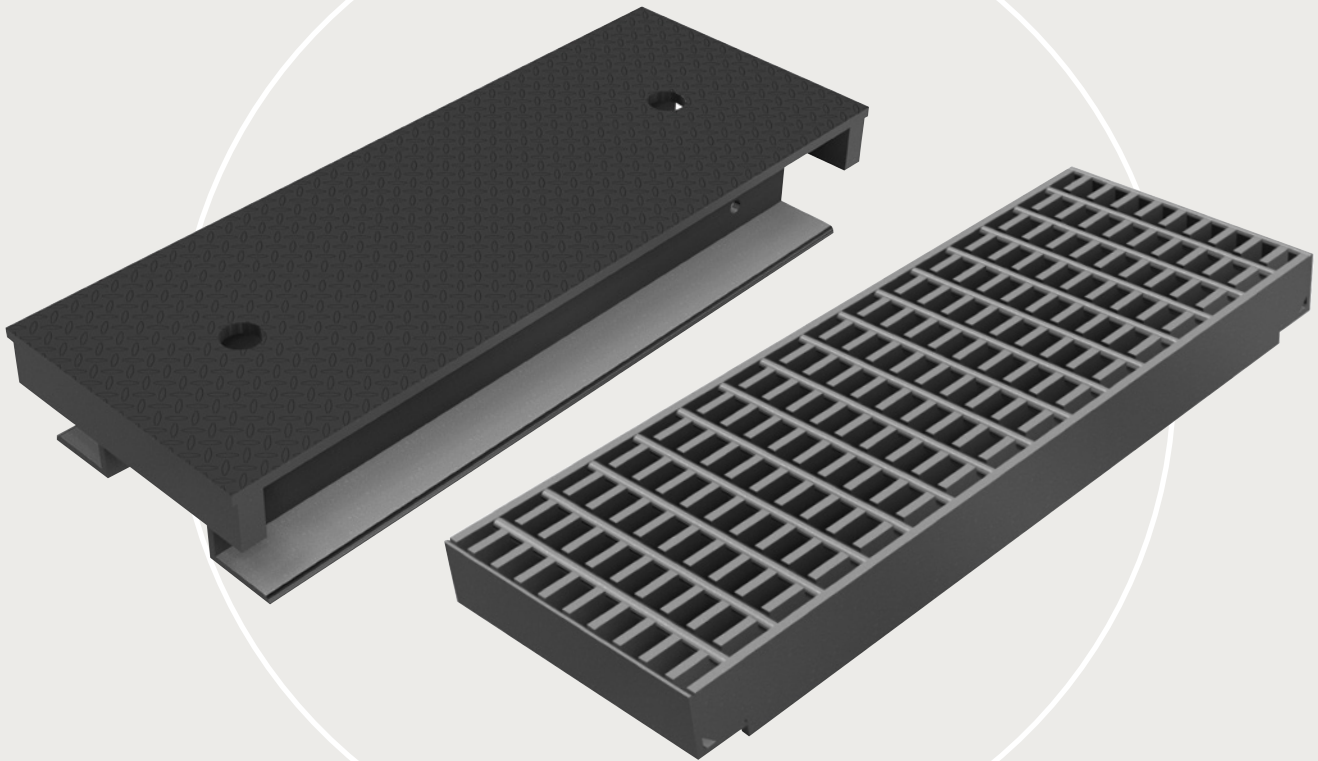
# Plastibeton®

## Steel Covers

Heavy Duty

32,000 LB Wheel Load

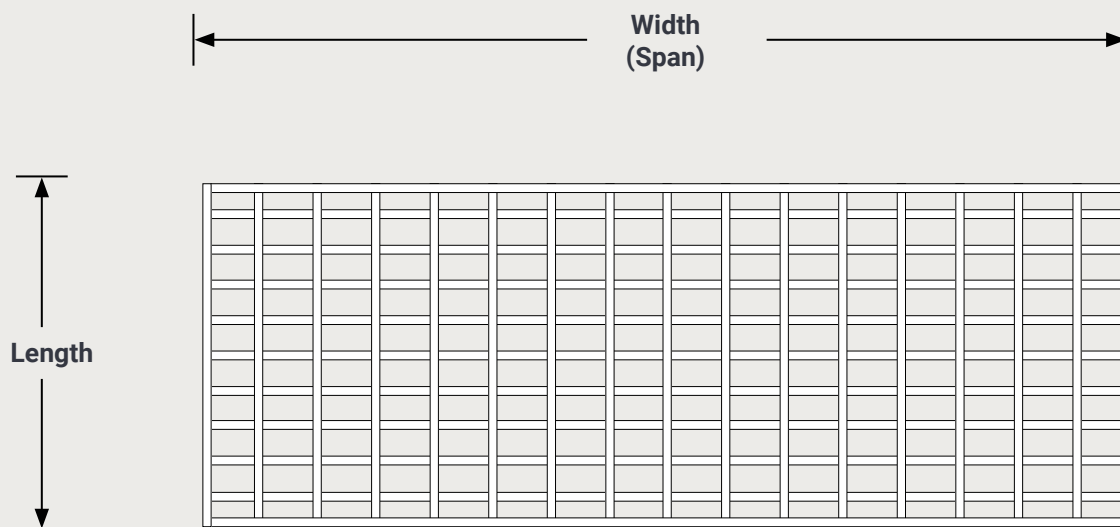
Galvanized Steel



## High-quality Cover Options

Steel covers are recommended for road crossings with frequent traffic. Our covers are a high-quality, durable galvanized steel and are designed to drop-in to our standard Plastibeton® Cable Trench. They feature a slip-resistant, diamond plate surface. Grated covers are also available in power applications where cable de-rating and heat dissipation is required. They can be placed continuously or at intervals.

# Durability for high traffic areas.



Grated or Diamond Plate.

Model	Size (Width x Length x Thickness)	Weight	Covers per Section
TC6 Steel*	7 1/2" x 39 5/16" x 1 1/4"	58	3
TC6 Grated*	7 1/2" x 39 5/16" x 1 1/4"	50	3
TC12 Steel	14" x 19 9/16" x 2 1/4"	70	6
TC12 Grated	14" x 39 5/16" x 2 1/4"	125	3
TC20 Steel	22" x 11 11/16" x 2"	59	10
TC20 Grated	21 7/8" x 13" x 2"	88	9
TC30 Steel	32 1/8" x 11 11/16" x 2 1/2"	118	10
TC30 Grated	31 13/16" x 11 3/4" x 2 1/2"	119	10
TC40 Steel	42 1/2" x 11 11/16" x 3"	177	10
TC40 Grated	42 3/8" x 11 3/4" x 3"	205	10

<b>Material</b>	Galvanized Steel
<b>Performance</b>	Traffic Rated
<b>Rating</b>	32,000 LB Wheel Load, 15 MPH Max

Dimensions may vary slightly. \*TC6 covers are 16,000 lb wheel load.

4-A-034 Revision 3/2023

Trusted partnerships.  
Full scale solutions.



[www.oldcastleinfrastructure.com](http://www.oldcastleinfrastructure.com) | (888) 965-3227